

The Lichfields logo is a black L-shaped graphic with the word "LICHFIELDS" in white, bold, sans-serif capital letters. To the right of the logo is a large teal graphic element consisting of several overlapping rectangular blocks of varying sizes, creating a stepped effect.

LICHFIELDS

Community Wealth Building in Planning

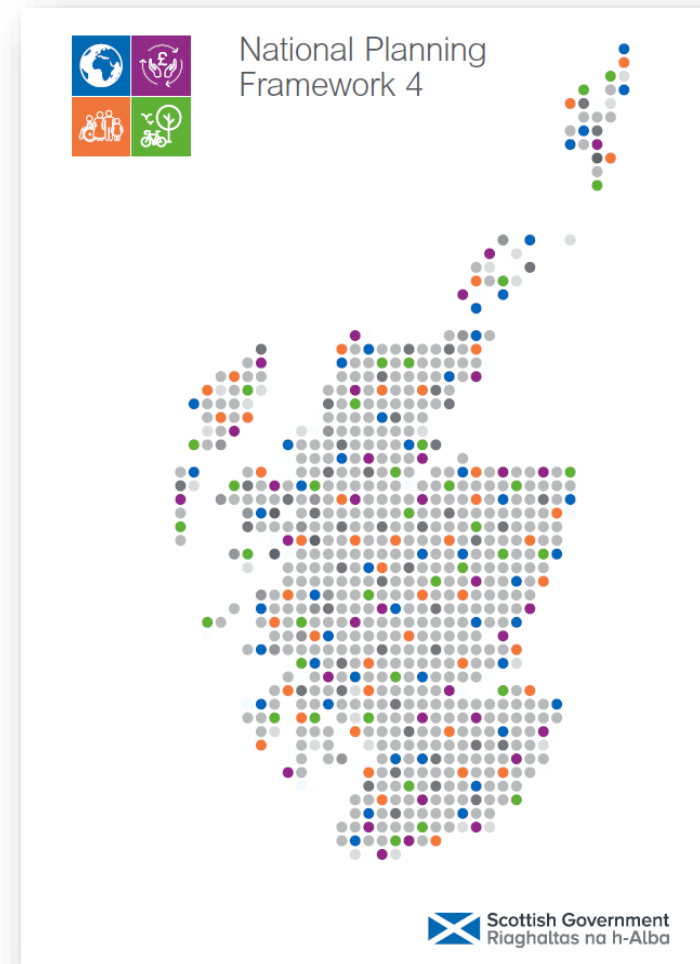
Presentation by Gordon Thomson

20th June 2024

NPF4 Community Wealth Building

LDPs should:

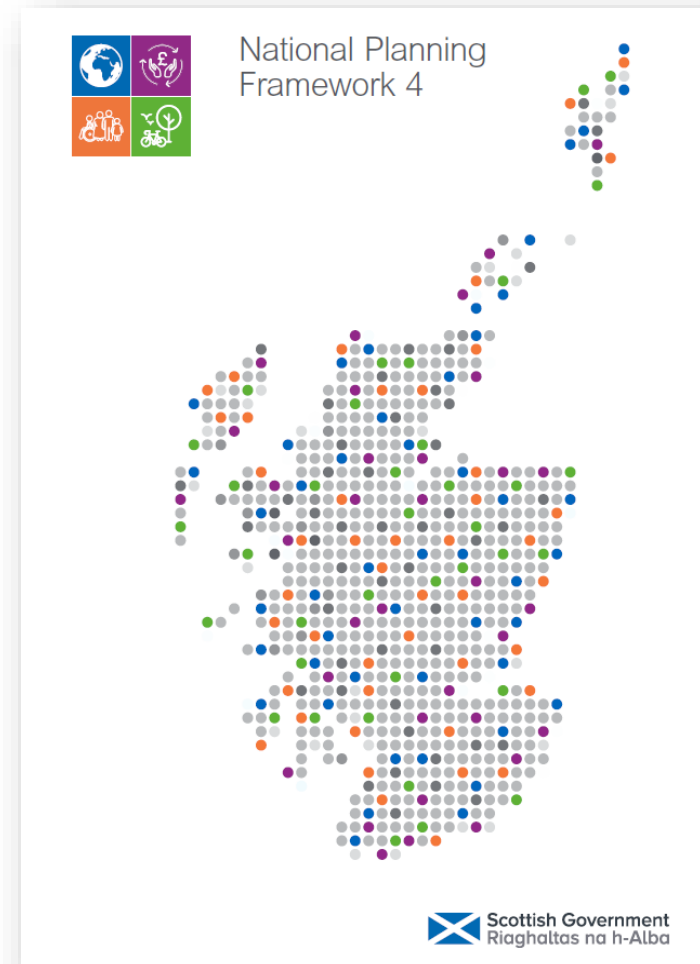
- be aligned with strategies for Community Wealth Building;
- identify community assets;
- set out opportunities to tackle economic disadvantage and inequality; and,
- seek to provide benefits for local communities.



NPF4 Community Wealth Building

Policy 25

- a) *“Development proposals which contribute to local or regional community wealth building strategies and are consistent with local economic priorities will be supported...”*
- b) *Development proposals linked to community ownership and management of land will be supported.”*



The five pillars of Community Wealth Building

- Socially productive use of land and property
- Plural ownership of the economy
- Making financial power work for local places
- Fair employment and just labour markets
- Progressive procurement of goods and services

Community Wealth Building is a practical approach to local economic development that supports the delivery of a wellbeing economy for Scotland. It delivers actions that give the people of Scotland a greater stake in our economy and wealth, making it work for us and our planet.



INCLUSIVE OWNERSHIP:

Developing more local and social enterprises which generate community wealth, including social enterprises employee owned firms and co-ops.



WORKFORCE:

Increasing fair work and developing local labour markets that support the wellbeing of communities.



FINANCE:

Ensuring that flows of investment and financial institutions work for local people, communities and businesses.



LAND AND PROPERTY:

Growing the social, ecological, financial and economic value that local communities gain from land and property assets.



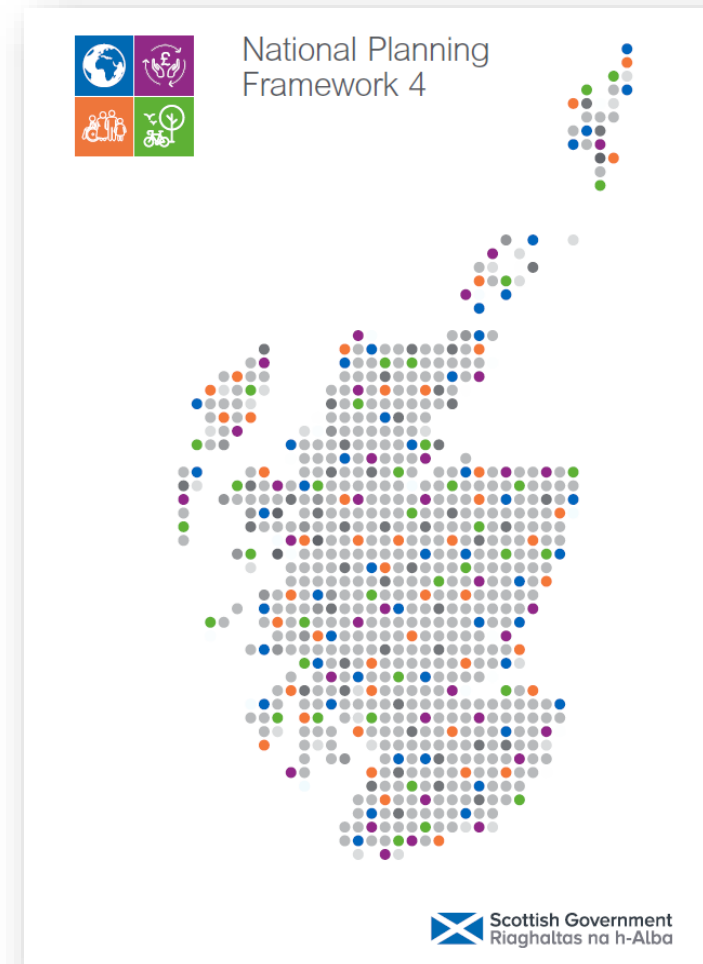
SPENDING:

Maximising community benefits through procurement and commissioning, developing good enterprises, fair work and shorter supply chains.

NPF4 Community Wealth Building

LDPs should:

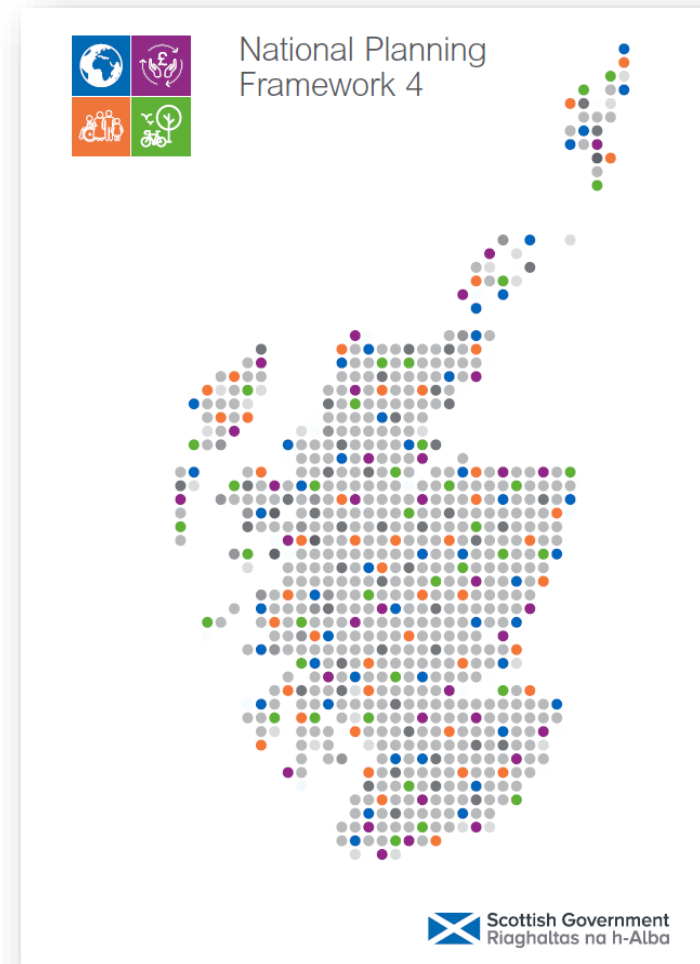
- be aligned with strategies for CWB;
- identify community assets;
- set out opportunities to tackle economic disadvantage and inequality; and,
- seek to provide benefits for local communities.



NPF4 Community Wealth Building

Policy 25

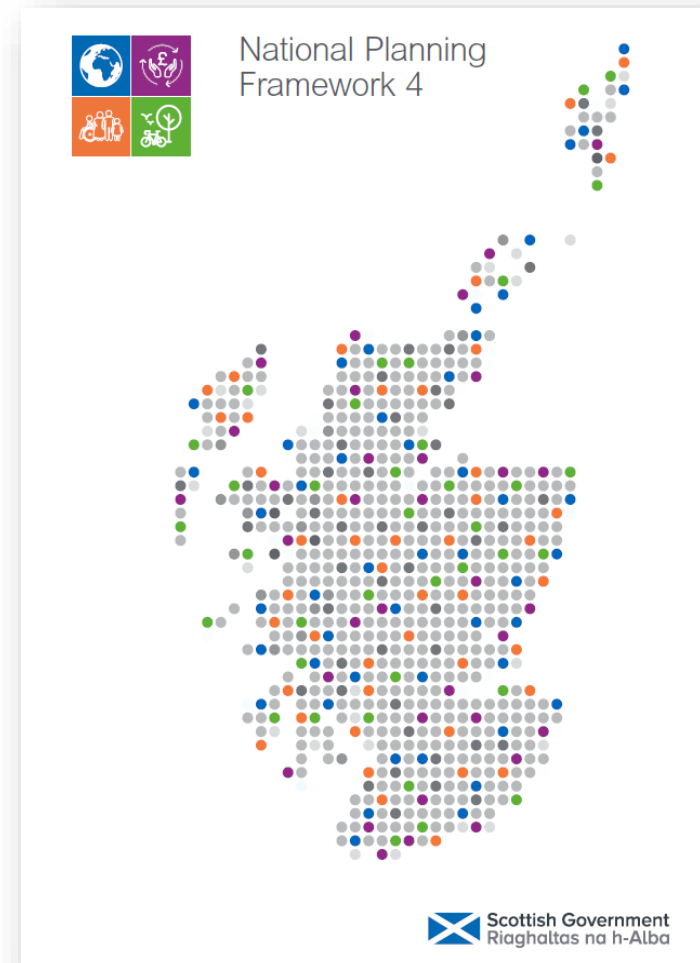
- a) *“Development proposals which contribute to local or regional community wealth building strategies and are consistent with local economic priorities will be supported...”*
- b) *Development proposals linked to community ownership and management of land will be supported.”*



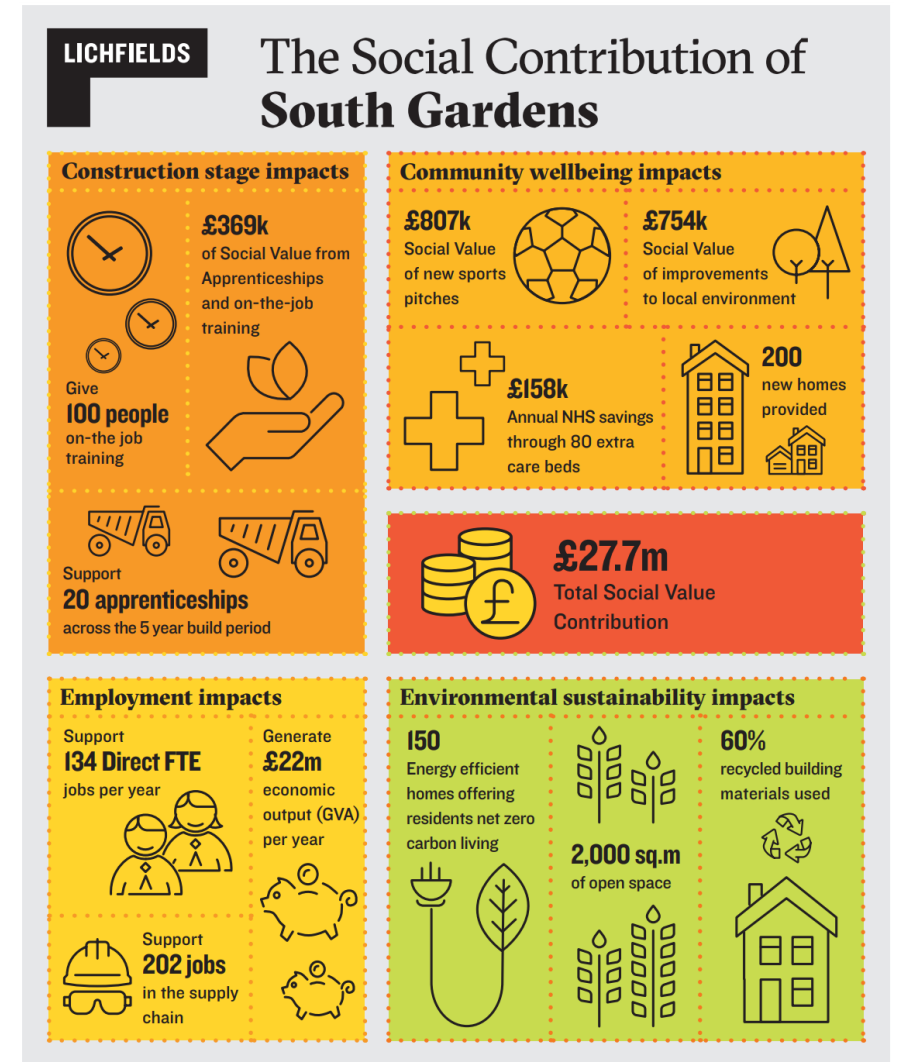
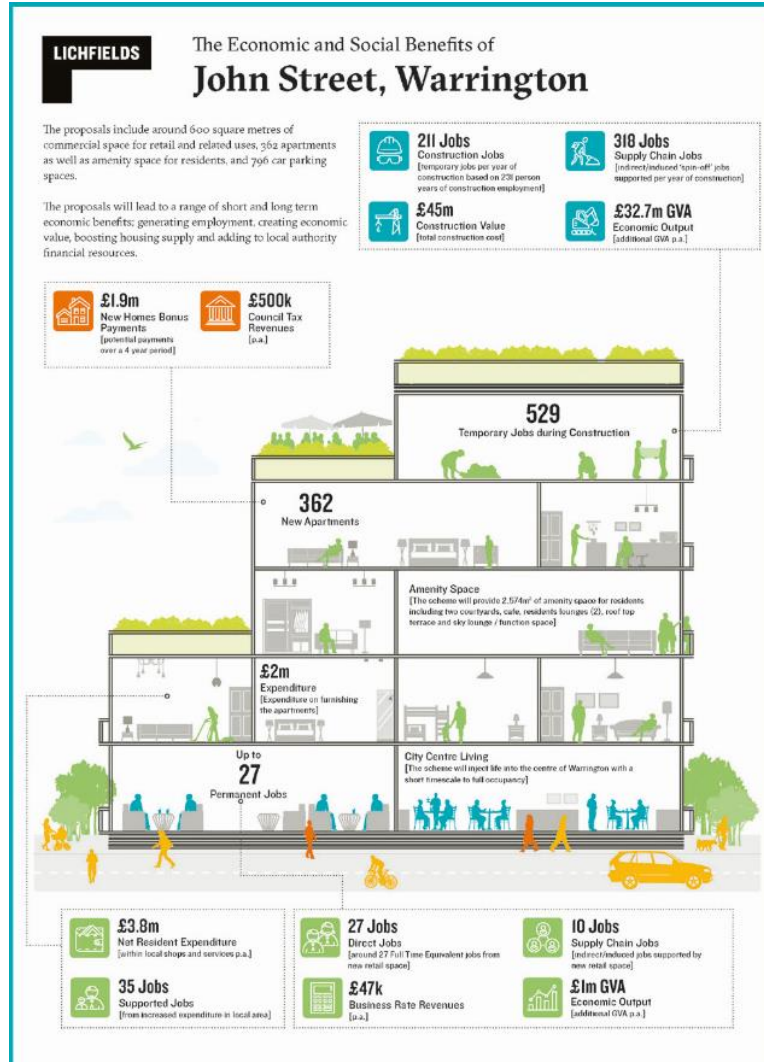
NPF4 Community Wealth Building

Policy 25

- a) *“Development proposals which contribute to local or regional community wealth building strategies and are consistent with local economic priorities will be supported. This could include for example improving community resilience and reducing inequalities; increasing spending within communities; ensuring the use of local supply chains and services; local job creation; supporting community led proposals, including creation of new local firms and enabling community led ownership of buildings and assets,...*



Economic and Social Value



LICHFIELDS

@LichfieldsUK