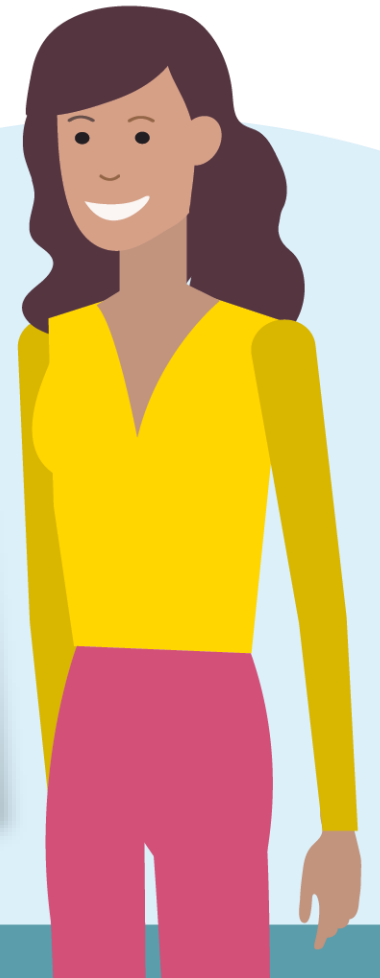


HOPS – Borders “Making Places”

20 June 2024



*50 Years Providing
Housing and Care*



Introduction

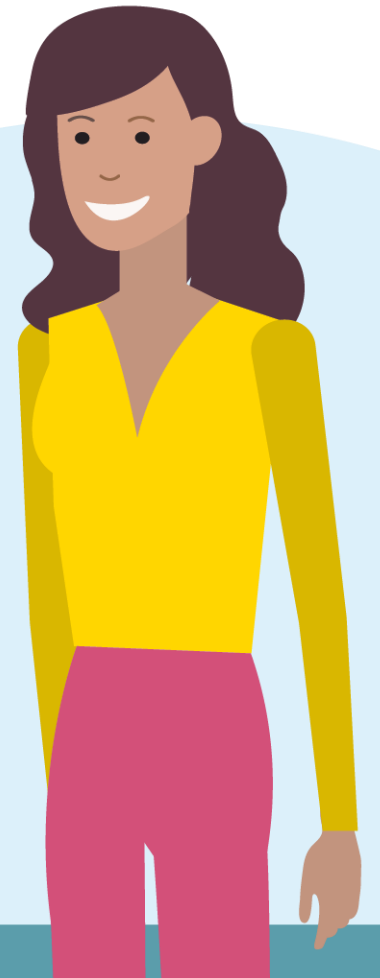


How do you create great places for people to live, how this supports communities, creates jobs etc.

Reflect on the collaborative and supportive approach we have developed in the Borders



50 Years Providing Housing and Care



TWO The Planners

Home Episodes Clips



Last on

BBC
TWO

Fri 27 Oct 2017

13:45

BBC TWO

More episodes

PREVIOUS
Episode 1

NEXT
Episode 3

Sorry, this episode is not currently available

Planners!

Episode 2

Episode 2 of 8

Series following those who make planning decisions. An application 1 hour

See all episodes from The Planners



Rural



Rural



Rural



Regeneration/Conservation



Regeneration/Conservation



Regeneration/Conservation



Regeneration/Conservation





Regeneration/New Build

16:17 Expt 16:19
Tweedbank
Calling at:
Tweedbank only.

Formed of 2 coaches.
ScotRail
Page 1 of 1 16:18:53

2
Car stop
3
Car stop

Regeneration/New Build

16:17 Expt 16:19
Tweedbank
Calling at:
Tweedbank only.

Formed of 2 coaches.
ScotRail
Page 1 of 1 16:18:53

2
Car stop
3
Car stop

Regeneration/New Build



New Build/New Communities



New Build/New Communities





New Build/New Communities

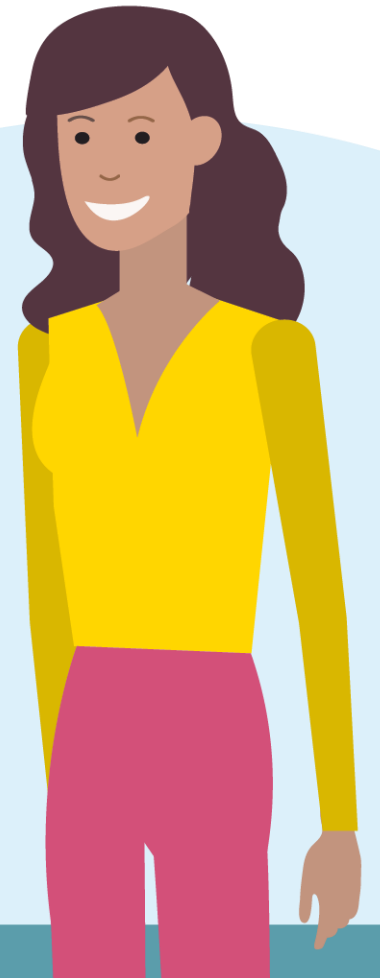
(Some) Issues

- We need homes – Housing Emergency
- Not just a numbers game – place and community
- Learn lessons of past – e.g. mixed tenure
- Standards and Sustainability

- Financial Constraints
- Innovation and Creativity
- Partnerships!

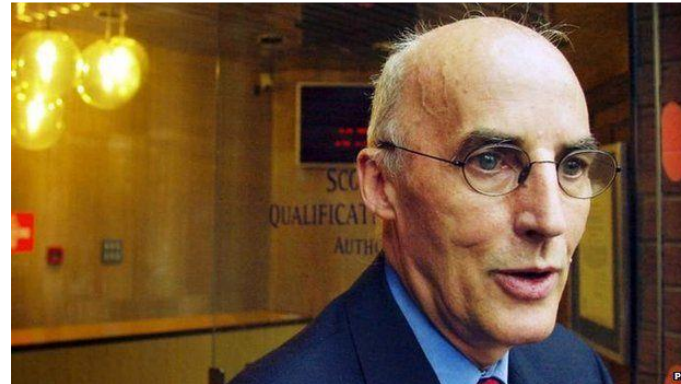


*50 Years Providing
Housing and Care*

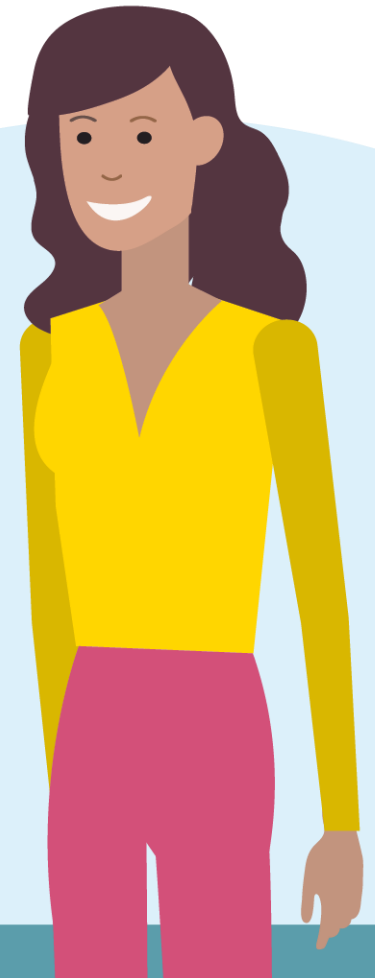


Places?

- Creating the conservation areas of the future?
- “In-keeping”
- Are we being bold enough about places?



*50 Years Providing
Housing and Care*





*50 Years Providing
Housing and Care*



Caring, Committed, Connected, Creative



**The Weaving Shed, Ettrick Mill,
Dunsdale Road, Selkirk TD7 5EB**



Customer Service: 03000 200 217



enquiries@eildon.org.uk



www.eildon.org.uk



EildonHousing



@EildonHousing

