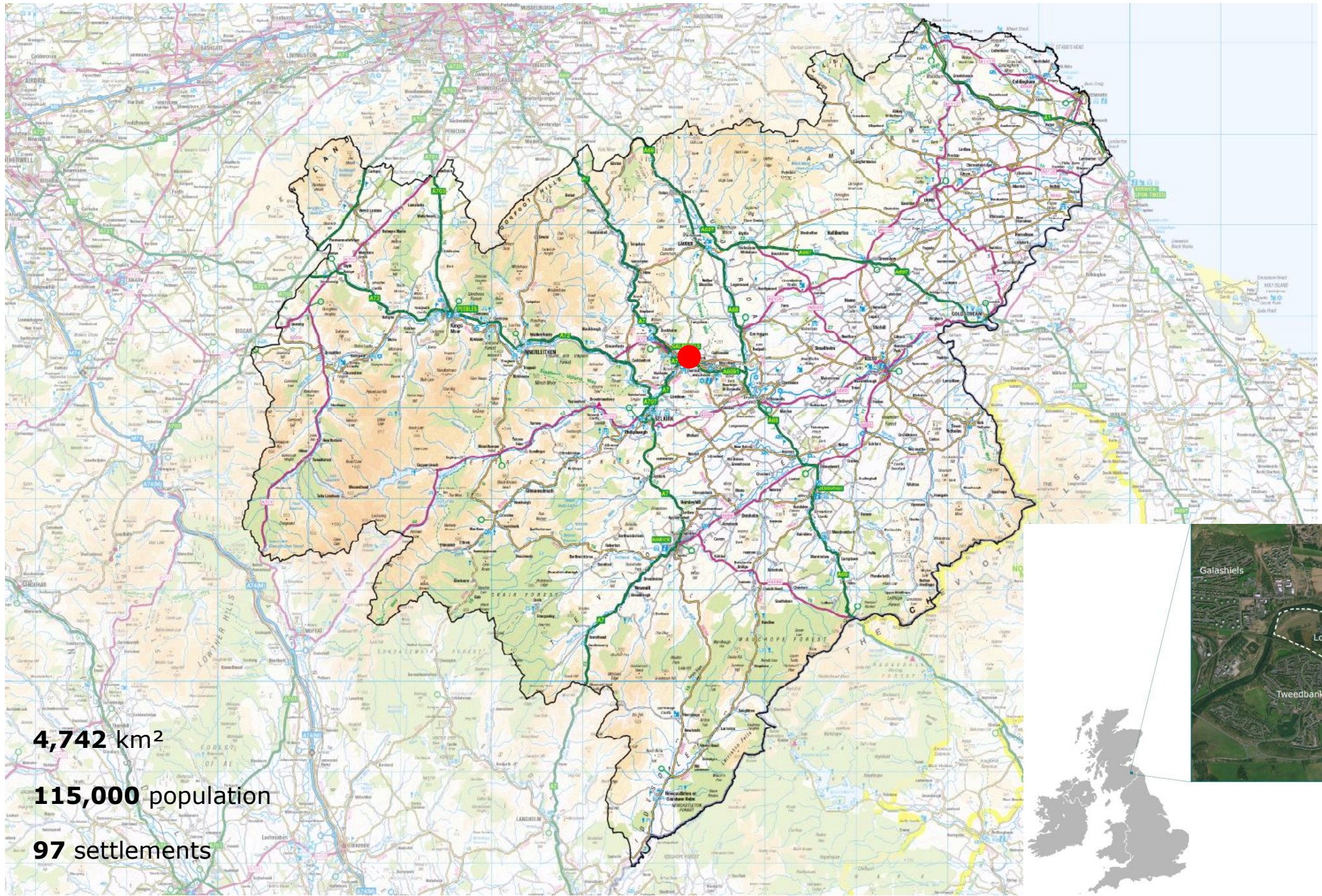


TWEEDBANK

A COMMUNITY FOR THE FUTURE





4,742 km²

115,000 population

97 settlements





Approximate location
of previous Bridgend
village dating back to
1790s

River Tweed

Existing Lowood
Settlement
dating back to mid
19th C

To Galashiels

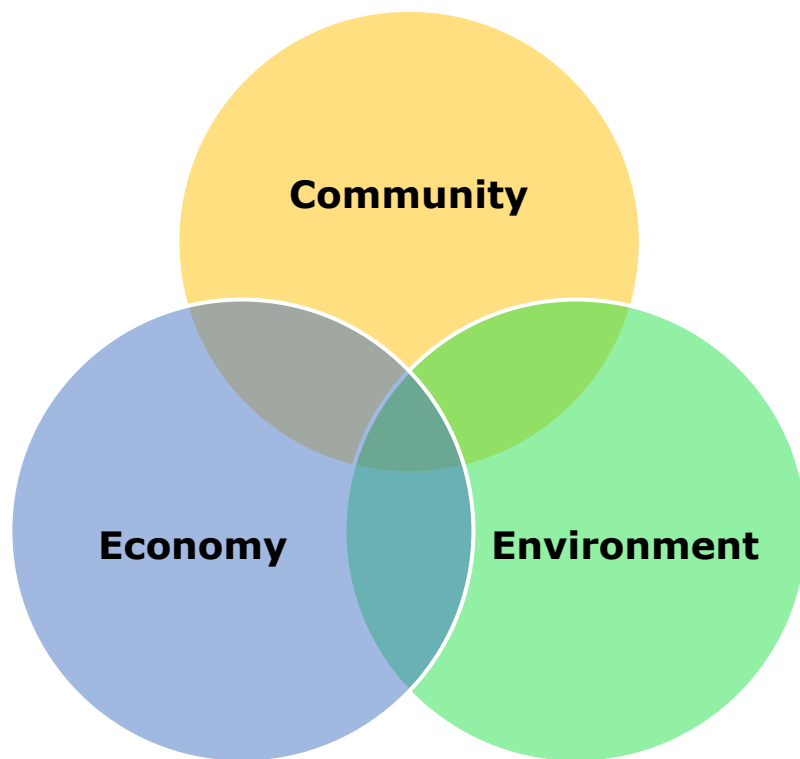


Existing Tweedbank
settlement built
between 1970 and
2000

New Tweedbank Station

To Melrose





Clean, green future

Contribute towards net zero emissions, reducing energy consumption with a resilient community that can decisively respond to climate change, employing state of the art renewable energy.



Clean, green future

Integrate nature, encouraging and promoting biodiversity and habitats in and around the site, **respecting and enhancing the landscape**, natural and environmental heritage and topography.



Fulfilling our potential

Support opportunities, at all ages, to acquire the knowledge and skills needed to realise their full potential and contribute towards positive outcomes for the region.



Strong inclusive economy, transport and infrastructure

Provide high quality business space to **stimulate business growth and job creation** and employment pathways in high value innovative sectors stimulating inclusive growth.



Strong inclusive economy, transport and infrastructure

Well-connected and encouraging active travel to support health and wellbeing and contribute towards reducing carbon emissions.



Empowered, vibrant communities

Well laid out and **integrated** with logical linkages to new and existing **communities** that appeal to residents, business users and visitors supporting the need of the local and wider community.



Good health and wellbeing

Create a **coherent, inclusive and accessible** place with a unique character/ sense of place, integrally connected to Tweedbank, sensitive to the setting, supporting wellbeing and enables healthy lifestyles.



Working together improving lives

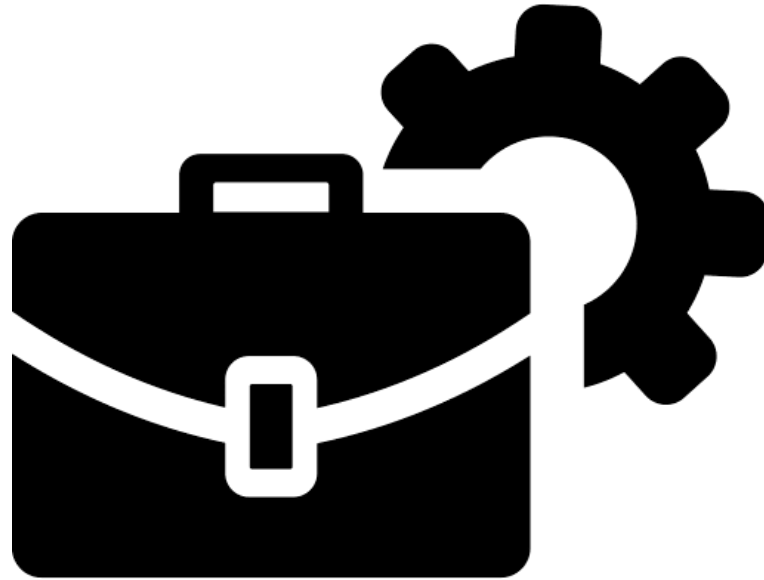
Harness the **combined power** of local communities, institutions and stakeholders in delivering a sustainable future and an economy that works for everyone.







PLACE



WORK



FOLK



Integrate nature... respecting and enhancing the landscape

Inviting nature in, with nature and biodiversity are integrated within the landscaping and architecture.



Impact



Conserve



Planting



Wildlife



Food



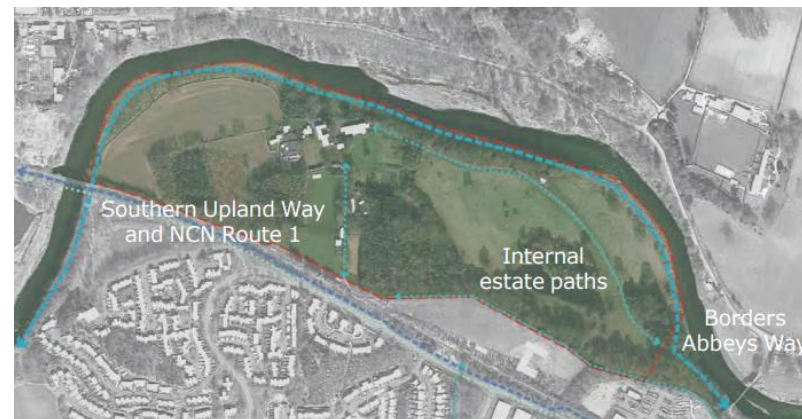


Integrate nature... respecting and enhancing the landscape



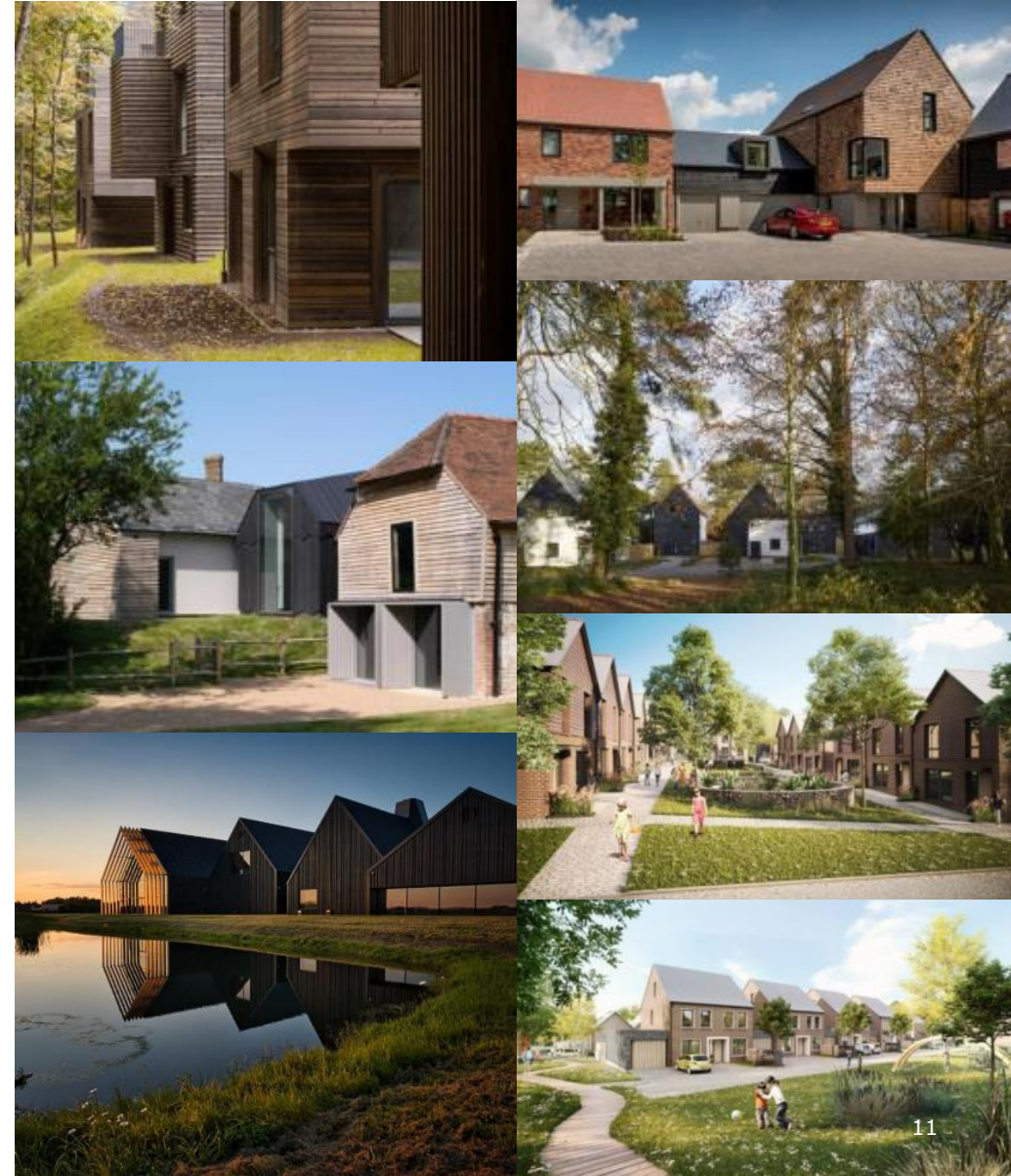


Coherent, inclusive and accessible place... well laid out, integrating communities





Coherent, inclusive and accessible place... well laid out, integrating communities



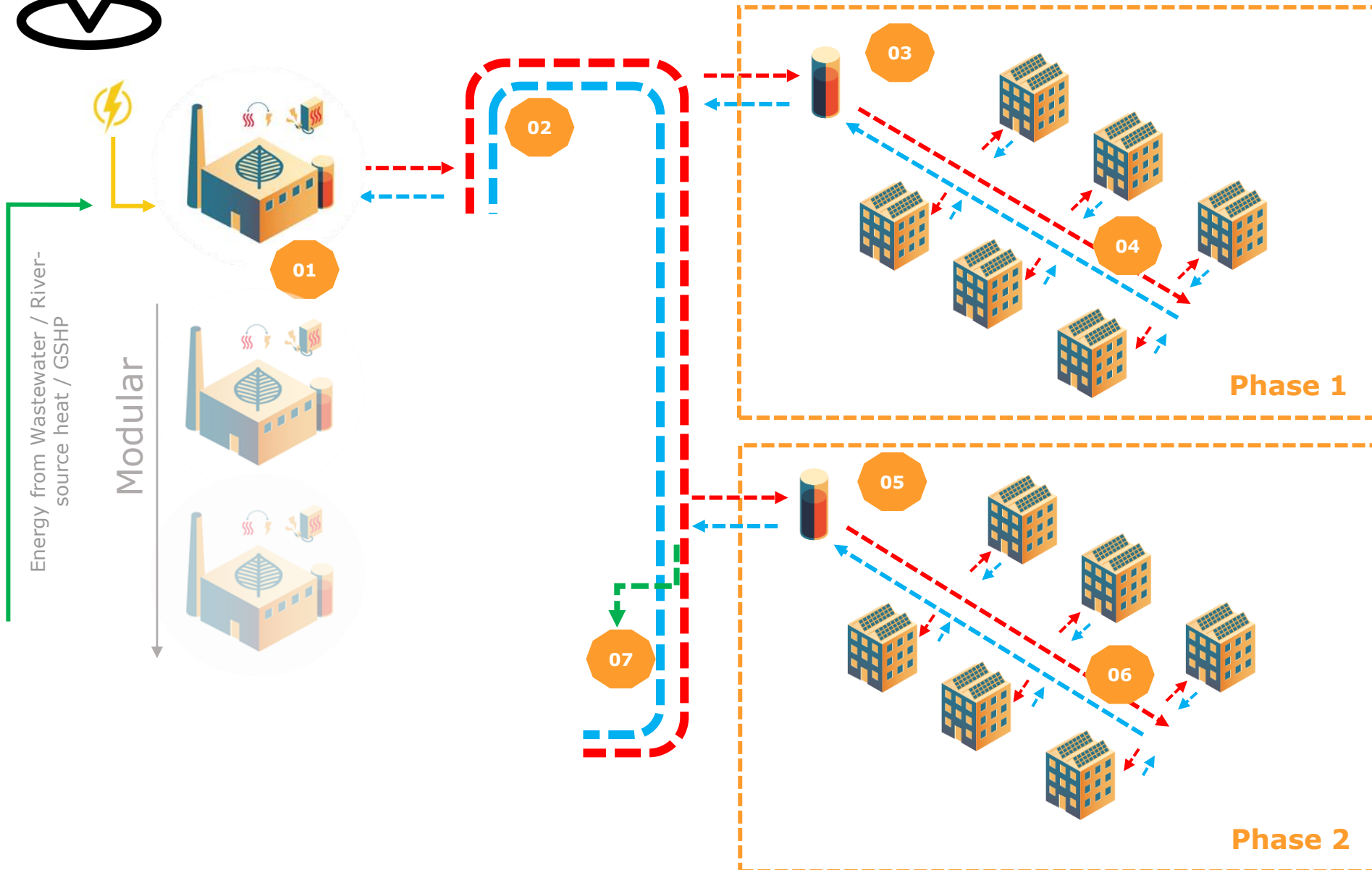


Coherent, inclusive and accessible place... well laid out, integrating communities





Contribute towards net zero emissions



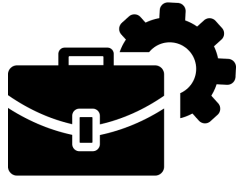
New Site Wide District Heating Network (With modular central energy centre)

1. Site Wide Energy Centre
2. Site Wide heat distribution network
3. Phase 1 heat substation.
4. Phase 1 heat distribution network
5. Phase 2 heat substation.
6. Phase 2 heat distribution network
7. Future connection (expansion)

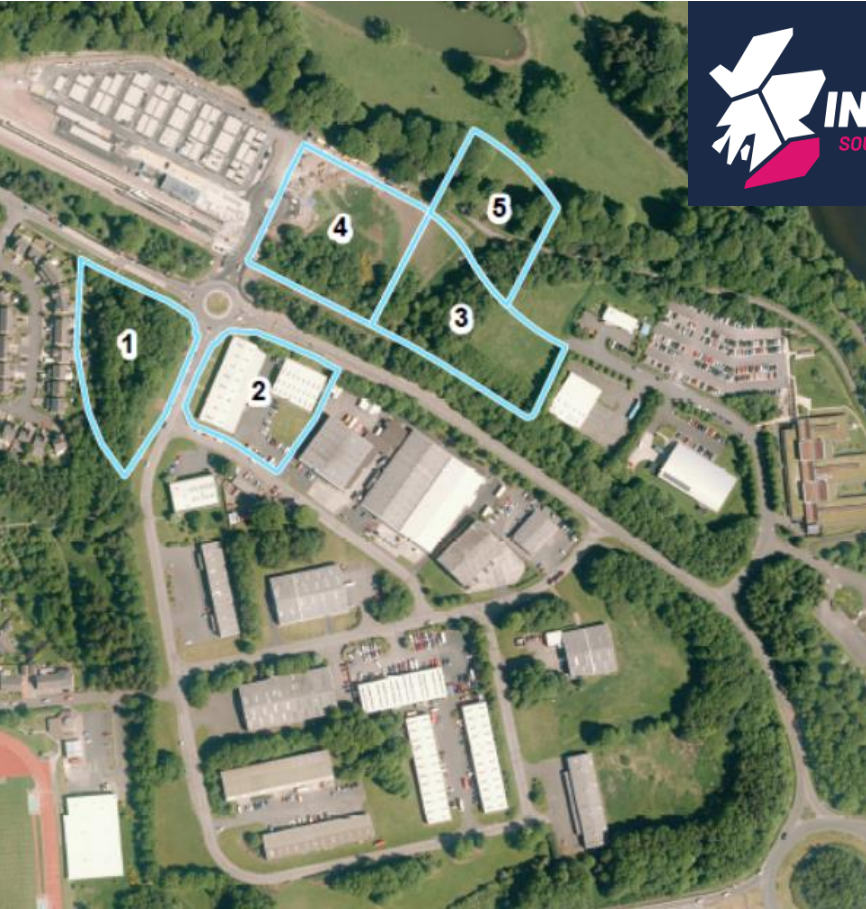
Notes:

Typically, under this option, each plot/apartment block to house a heat plate exchanger with distribution pipework to all apartments.

Heat Interface Units (HIU) or Water Source Heat Pumps (WSHP) to serve space and DHW requirement of each dwelling.



Stimulate business growth and job creation



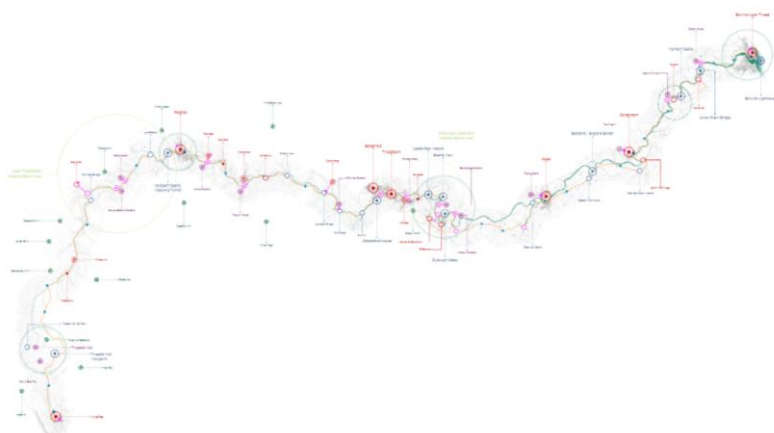


Harness the combined power of local communities, institutions and stakeholders





Well-connected and encouraging active travel





Provide opportunities to acquire knowledge and skills to realise their potential





Provide opportunities to acquire knowledge and skills to realise their potential

Economic Development	Strategic Planning	Strategic Housing	Parks & Environment	Heritage	Architects
SBc Contracts	Engineers	Major Projects	Estates	Community Food Growing	Carbon/ Net Zero

TWEEDBANK

A COMMUNITY FOR THE FUTURE



Scottish Government
Riaghaltas na h-Alba
gov.scot



SOUTH of
SCOTLAND
ENTERPRISE

fsb⁰⁸



SCOTTISH
FUTURES
TRUST

