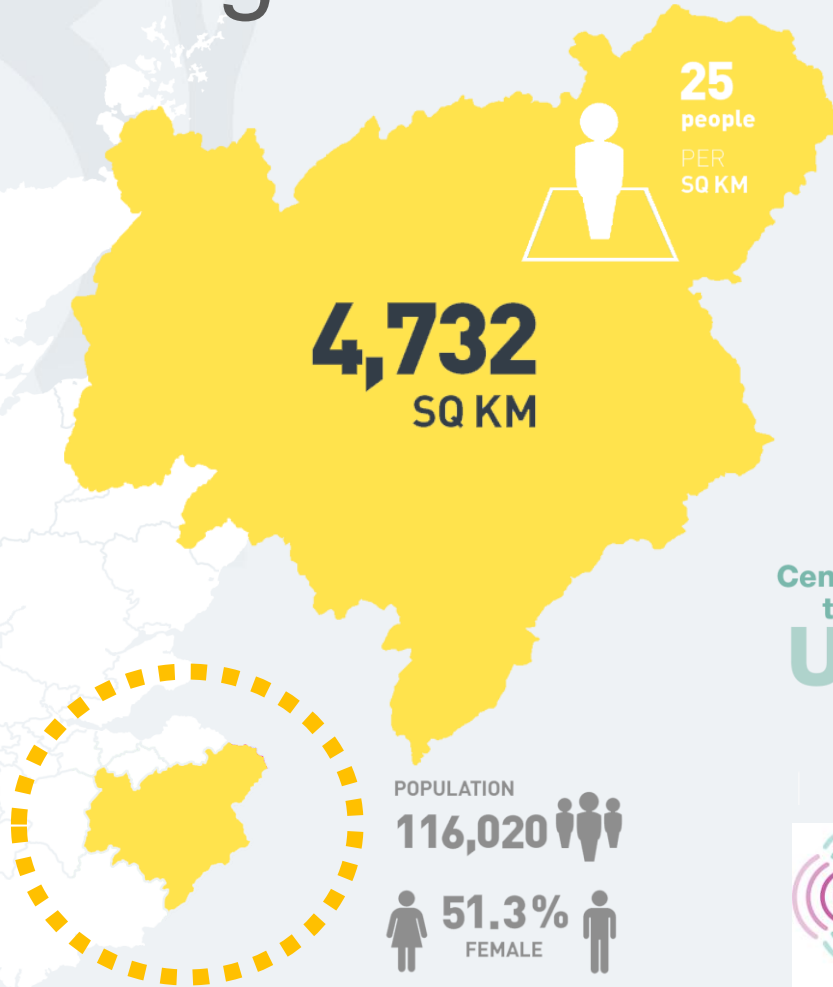


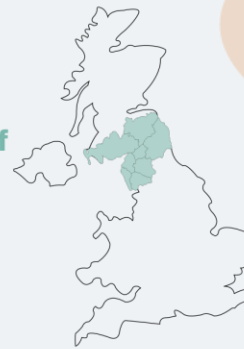


# Place Making – Across the Scottish Borders

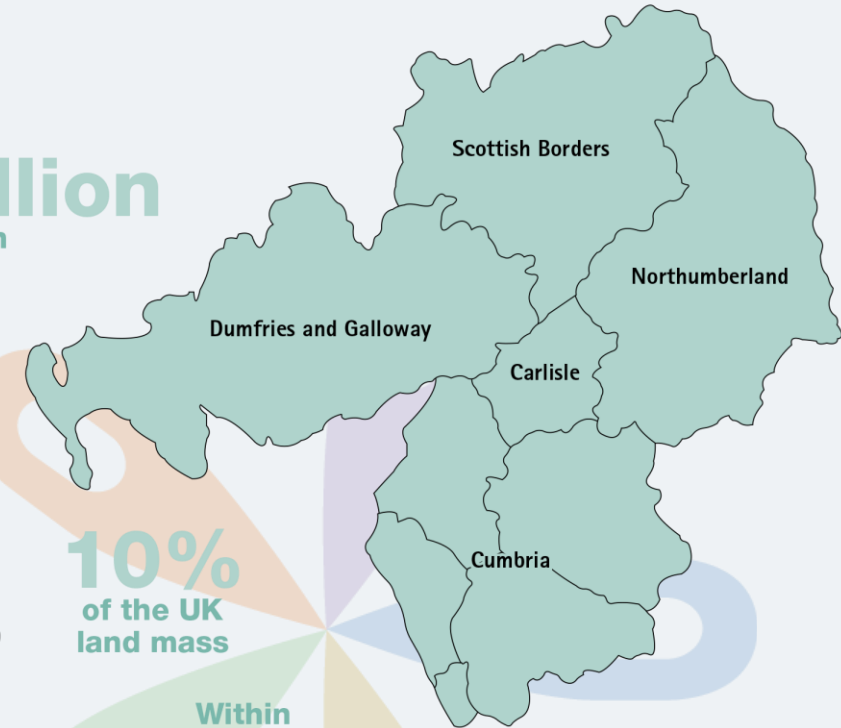


Over  
**1million**  
population

Centre of  
the  
**UK**



**10%**  
of the UK  
land mass

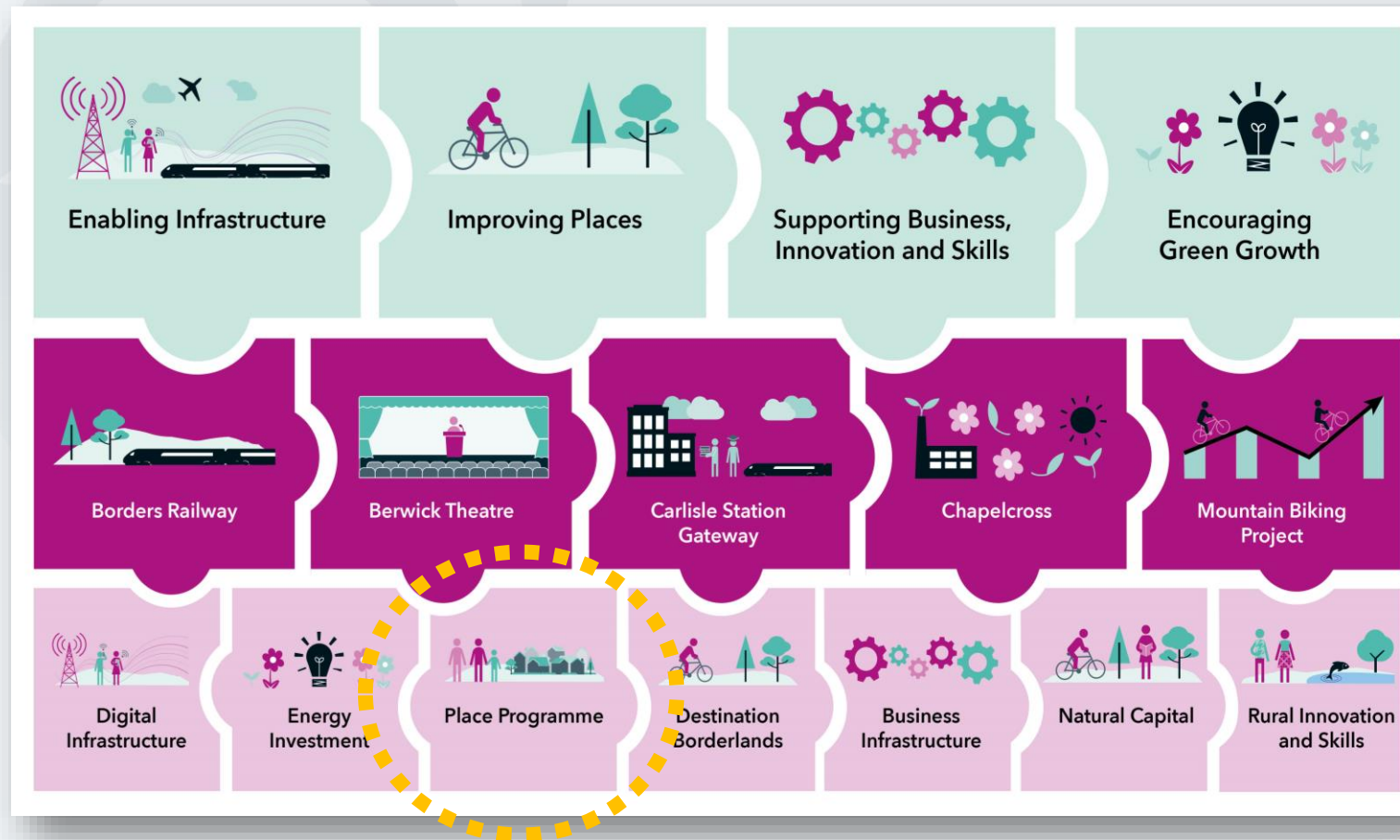


Within  
**2 hours** drive of  
**14 million** people





# Borderlands Place Programme



## Borderlands Towns:

- Eyemouth
- Galashiels
- Hawick
- Jedburgh



# Borderlands Place Programme

Borderlands Inclusive Growth Deal

What is the Deal? Place Programme What else is happening?

## Place Programme

The Borderlands Place Programme is one of strands of work that make up the programmes that will be delivered under the Deal.

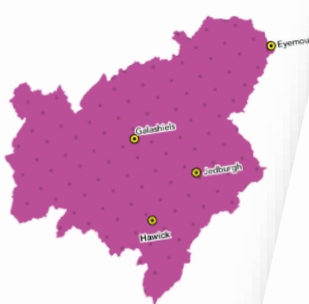
It focuses on four Scottish Borders towns which were prioritised for this investment package based on the multiple deprivation index. Those towns are:

- Eyemouth
- Galashiels
- Hawick
- Jedburgh


We often refer to these in shorthand as "Borderlands Towns" and this is simply in reference to their status as the nominated towns in this programme.

The Borderlands Towns are eligible for investment from a £7.25 million pot over 7 years (24/25 - 30/31) which can be used for a range of eligible interventions, those are:

- Purchase and assembly of land and buildings
- Remediation of vacant and derelict sites
- Property development and enhancement, including schemes to encourage private, public and third sector investment in improving buildings, re-modelling business premises and conversion of buildings to new uses to support the repurposing of towns (eg. residential, leisure, community uses)
- Development of arts and cultural, visitor economy, community and skills and education facilities
- Enhancement of shop, business and commercial public facing fronts
- Development of the upper floors of buildings for affordable housing and other use



National Planning Framework 4

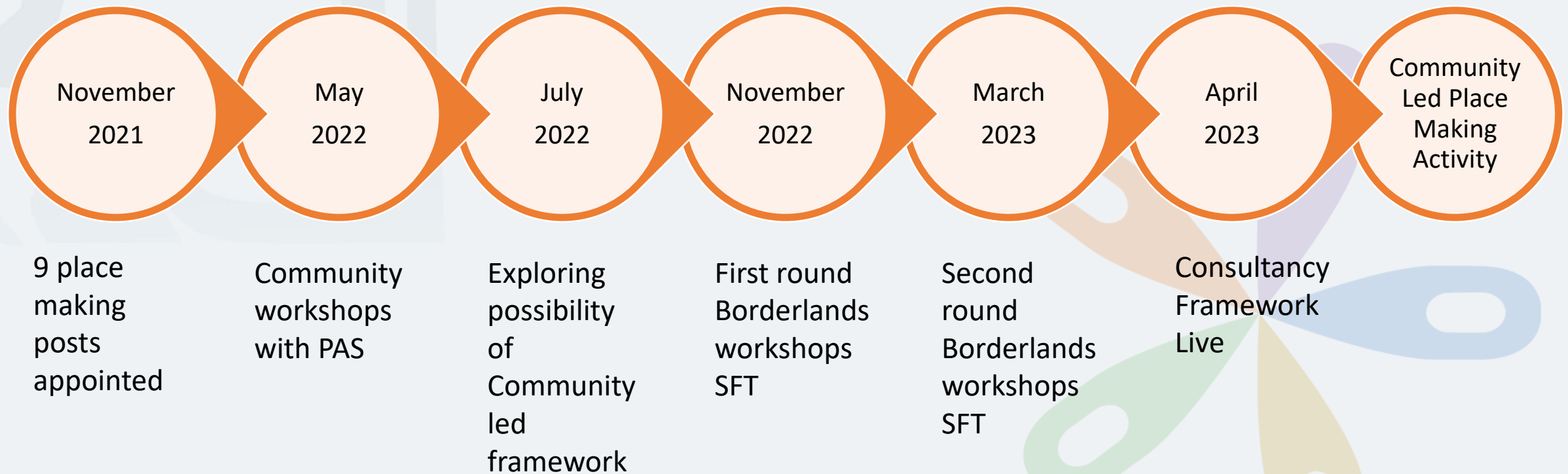


Scottish Government  
Riaghaltas na h-Alba

# One Plan, One Place



# Place Making Timeline





# Support




Support


Peer Support Network [People](#) Process Place Making Specialists Peer Support Webinars Tools Funding

## Community Place Plan + Regeneration Officers

Planning professionals who can guide communities through community planning processes, support Community Engagement Officers and help develop Local Place Plans that can be adopted into local planning legislation.



**Jess Houghton**  
Berwickshire, Cheviot,  
Teviot + Liddesdale



**Sharon Renwick**  
Eildon, Tweeddale,  
Hawick

## Support for Local Place Plans

Lot 1 offers support for communities to develop a Local Place Plan to attract investment into their place.

Six companies were awarded onto the framework based on their responses to the questions posed, with the returns marked by community members and a multi agency panel from SoSE, Borders TSI and Scottish Borders Council.

All companies provided a range of examples of community working - for full profiles on each please follow the links below:

[AtkinsRealis](#) | [Community Enterprise](#) | [Ironsides Farrar](#)  
[New Practice](#) | [Planning Aid Scotland](#)  
[The Paul Hogarth Company](#)



Examples of work from framework companies



# Tools + Peer Learning



**Borders Community Action**  
30 May at 17:46 · 🌐

🔔 Coming up next week! Community-led planning peer support network session, for anyone involved in developing a Local Place Plan or Community Action Plan in the Scottish Borders.

📅 Thursday 6 June, 6-8pm, online.

🔑 Theme: moving from community priorities to identifying projects.

Find out more and register here: <https://borderstsi.org.uk/clp-network/>

👍❤️ 5

1 share

**Part 1**

**Where I go and what I do?**

Streets, squares & buildings

Nature: Parks, woods, hills, beaches

Play, hang out, games & hobbies

Where do we go and what do we do?

What do I need to live well?

How do we get around?

What makes us feel safe or

moving around

public transport

traffic and parking

streets and squares

natural space

play and recreation

facilities and amenities

work and local economy

housing and community

social contact

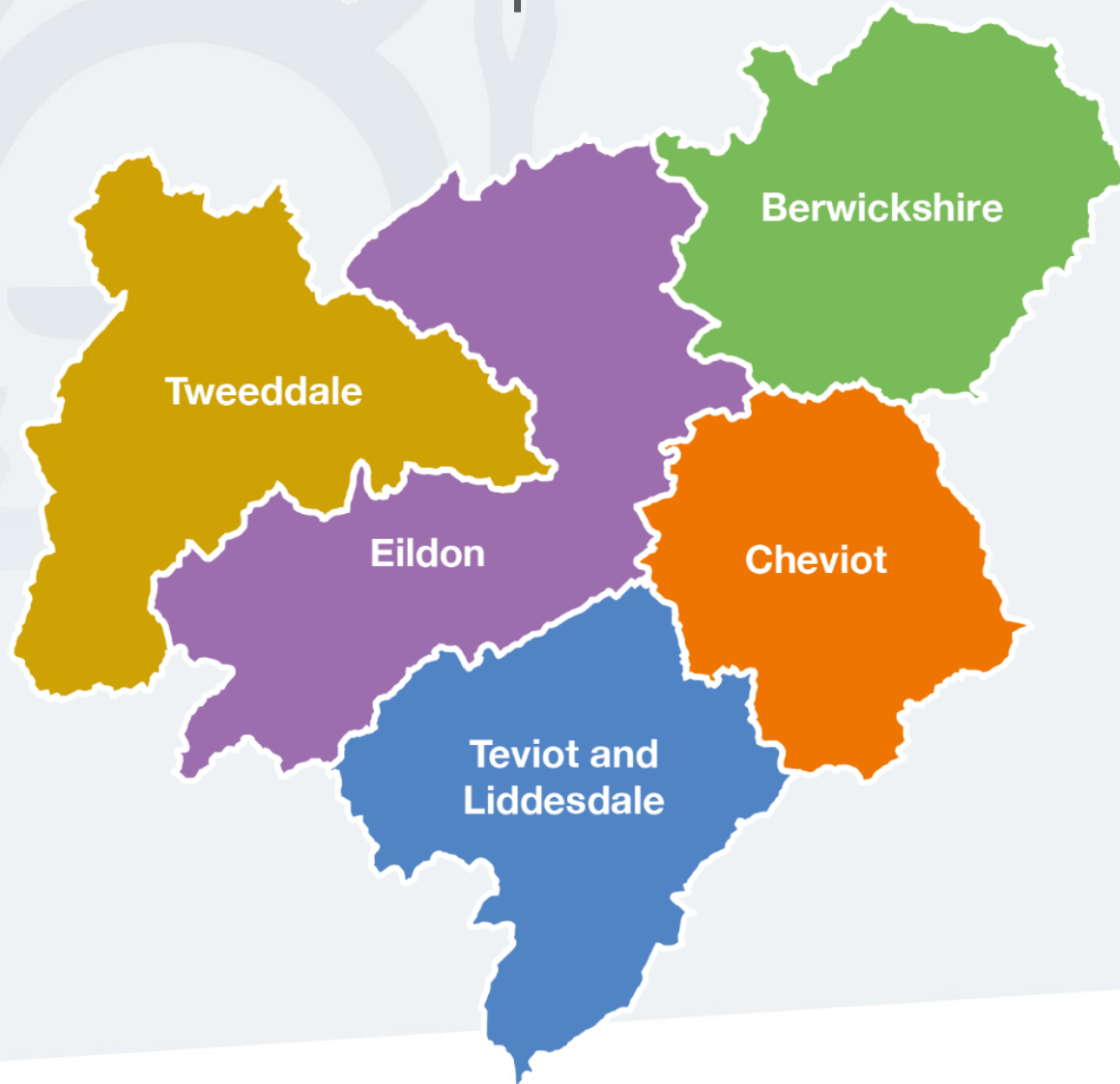
feeling safe

care and maintenance

influence and sense of control



Communities expressed an interest in Place Making



60

across Scottish Borders

87%

of Community Council Areas





Some of the recurring themes...

*“talent drain”*

*“falling footfall”*

*“We see the out migration of young people”*

*“Assets are not maximised”*

*“Connectivity is an issue and public transport is limited”*

*“We want face to face meetings in our health centres”*

*“We need to balance our domestic, agricultural, environmental and tourist needs”*

*“it’s not always inclusive”*

*“poor internet”*

*“There are pockets of deprivation”*

*“Accessing services is a problem”*

*“There is a shortage of youth activity”*

*“pressure on the NHS and social care”*

*“death by masterplan”*





*"a great place to  
raise a family"*

## Some of the ideas and aspirations...

*"More visitors, not day trips"*

*"Build on our rich natural resources"*

*"Invest, refurbish and conserve dilapidated buildings"*

*"good quality family housing to  
attract people"*

*"Blue economy"*

*"a base for adventure"*

*"healthy place to live and work"*

*"create a thriving community"*

*"more housing which is energy efficient and affordable"*

*"Cultural Hub"*

*"Make more of local mountain biking"*

*"Create green jobs, and a skilled workforce in sustainable employment"*



# Community Led Planning



## Place Plans which:

- can be registered as LPP's
- provide a pipeline for community action and economic development
- influence service planning and Council initiatives
- Influence locality plans across the Community Planning Partnership